



Barbican Theatre

**Castle Street
Plymouth
PL1 2NJ**

01752267131

**TECHNICAL INFORMATION
FOR VISITING COMPANIES**

**Technical enquires :
technical@barbicantheatre.co.uk**

Technical Information Auditorium

Access : The theatre building, auditorium, backstage areas and stage have good disabled and wheelchair access. The lighting control box and upper dressing room have difficult access.

Loading and unloading access for the Auditorium is via the rear of the building on Lambhay Street. There are a few steps a short path outside and access is through the raked auditorium. (no lift is available to stage level)

Parking : Please Note : There is no parking available at this venue
Nearest recommended long stay car park is Elphinstone Car park. It is located at the T- Junction of Lambhay hill and Madeira Rd.
This car park is 24hrs no height restrictions and accepts card payments approximately £9 per day.

Auditorium

Seating : Standard - 110 fixed seats in a raked auditorium
Other - additional 34 seats with stepped pit open as seating area
Both end – on

Stage : A semi sprung wooden floor, with black / grey performance / dance floor available.
Stage front lifts out to reveal stepped pit beneath (see plans)
Open stage with flexible black drape surround, legs and cyclorama (see plans)

Dimensions : 10.20m width (wall to wall)
8.1m depth (from DS edge to upstage curtains) 6.35m depth with pit open

5.50m height to fixed scaffolding IWB LX Grid
7.90m to highest point of ceiling

Ceiling : The ceiling is beamed and vaulted above the lighting bar line

Dressing Rooms : 2 dressing rooms, and 1 x shower (shower has no disabled access)

Main Auditorium Specification

Lighting

Distribution : 96 circuits (15 amp) Hard patch to dimmers in tech office
Dimming : 54 ways DMX (Anytronics 194 series) in 3 phases 10A per channel
LX Desks: ETC Ion Xe with eos 20 fader wing
Element 60 250ch
Remotes:- ETC iRFR iPad

Patching Notice: Dimmer Pack loads must not exceed 7.2kw per pack (we have 9 x dimmer packs with 6 x 10a ways on each). This is our maximum capacity on power distribution as each is supplied with a 32a RCBO breaker.

Projection

Projectors : 2 x Panasonic PT-EW730Z 7500 lumens WXGA 16:10 (cased)
2 x Standard lenses 1.7-2.8:1
1 x ET ELW22 lens zoom 0.8-1.0:1
1 x ET ELW 21 lens Fixed-focus lens, 0.8:1
2 x Rigging brackets with truss mount adapters
1x Benq MS527 3300 lumens DLP XGA 4:3

1x Screen : White Cyclorama at rear of stage – see plans
1x Fast fold: 16:10 305x190cm Celexon 16:10

Sound

Fixed FOH PA : Dynacord full range audio system

2 x Dynacord TS400 4 x 6.5" Three way loudspeaker (Main L+R)
2 x Dynacord TS100 1 x 6.5" + 1" Two way loudspeaker (low level fills)
2 x Dynacord TS100 1 x 6.5" + 1" Two way loudspeaker (rear surround)
2 x Dynacord PSE215 single 15" subwoofer (loose on ground level)

3 x Dynacord C1300 DSP processed Amplifier
1 x Dynacord C1800 DSP processed Amplifier

Loose active speakers :

(contact with your requirements as some equipment is held off site)

Monitors : 4 x ElectroVoice ETX10P active speakers (loose)
2 x ElectroVoice ETX15SP (onstage Subs loose)
2 x Electrovoice ZXA1 active speakers (loose)

Sound Desks : 1 x Behringer X32
1x Midas M32R

32 Mic/Line 48 Channel Digital Mixing Desk with 16 Aux Outs, 6 Matrix Outs and

LCR/LR+Mono Main Outputs

Stageboxes : 2x Behringer S16 Digital snakes one SL and one SR

Playback : portable flight cased QLAB mac mini set-up

Comms :Wired Canford TECPRO 6x sets, Tie lines: Box/USL/USR/DSL/Seats

Technical Equipment

House Lantern stock

<u>Fresnel's</u>	<u>Quantity</u>	<u>Barn doors</u>
ETC Source4 Fresnel 750 (750w)	20	20
Strand Quartet F (650w)	1	1
Selecon Acclaim Fresnel (650w)	8	8

<u>PC Fresnel's</u>	<u>Quantity</u>	<u>Barn doors</u>
Strand Quartet PC (650w)	11	11

<u>Pars</u>	<u>Quantity</u>	<u>Lenses</u>
ETC Source4 Par	12	All with VNSP, NSP,MFL,WFL lenses
Par 36 (pin spots) (30w)	15	
Par 16 (birdies) 240v (35w)	10	

<u>Profiles</u>	<u>Quantity</u>	<u>Notes</u>
ETC source4 (750w) 25-50 zoom	14	8x Gobo holders Size B 2 x IRIS
ETC source4 (750w) 15-30 zoom	6	
ETC Source 4 Jr (575w) 25-50 zoom	4	1x gobo holders (size M) 1x Iris
Prelude 16-30 (650w)	6	

<u>Floods</u>	<u>Quantity</u>	
Strand Coda 1 (500w)	2	

<u>LED</u>	<u>Quantity</u>	<u>Notes</u>
ETC coloursource spot DB	10	Fixed 50deg lenses
Philips Selecon PL1 Fresnel Mk2 RGBW	4	4

Philips Selecon PL1 Cyc Mk2	4	
ADJ mega Tripar profile plus RGB UV	16	

<u>Specials</u>	<u>Quantity</u>	
Backlight blue UV Cannon	1	
4ft Fluorescent UV fittings	2	

Power Distro

<u>Item</u>	<u>Quantity</u>	
15a extension various lengths		
15a Grelcos/ 2-1 splitters	10	
16a extension various lengths		
16a 3 way splitter	4	

Microphones

Wireless:

- 2 x EW335 G3 GB Band Cardioid Handheld Radio Mic sets
- 1x EM 300- 500 G4 GB Band lapel Radio mic set
- 1 x EW312 G3 GB Band Omnidirectional Lapel Radio Mic set\
- 1 x Additional Sennheiser G4 lapel belt pack
- 1 x Freeport FP12 Omnidirectional Lapel Radio Mic set

4 x Sure SM58 Dynamic microphones

Small selection of Microphone Stands/ Music stands

Processing

Selection of portable DI boxes and XLR cable

Other Stock

- 8 x Floor tank traps Black
- 6 x 2.5m high scaffold tubes Black
- 24 x black doughty boom arms
- 8 x Smarty block Floor stands
- 6 x Mini wooden floor stands for birdies

10 x 12.5kg Stage weights

Masking

Standard configuration of the auditorium would provide black serge wool masking surrounding the stage. (Black box)

The up stage curtains are sewn ruched and are on a pulley track (USR) masking the white cyclorama.

The masking on stage left and right can be configured to provide wing space up to 1.5m deep (this does compromise stage space). An entrance DS, MS and upstage on both sides can be configured.

6 x 1.5m black serge hanging legs can also be provided.

2x 9m borders are also available (these are sewn ruched)

1x 9m flat boarder is available for the masking of upstage track bar / shadows of fixtures when using cyclorama lighting.

View from audience towards stage



View from stage towards audience



With pit seating



Access to tech box



Inside the tech box

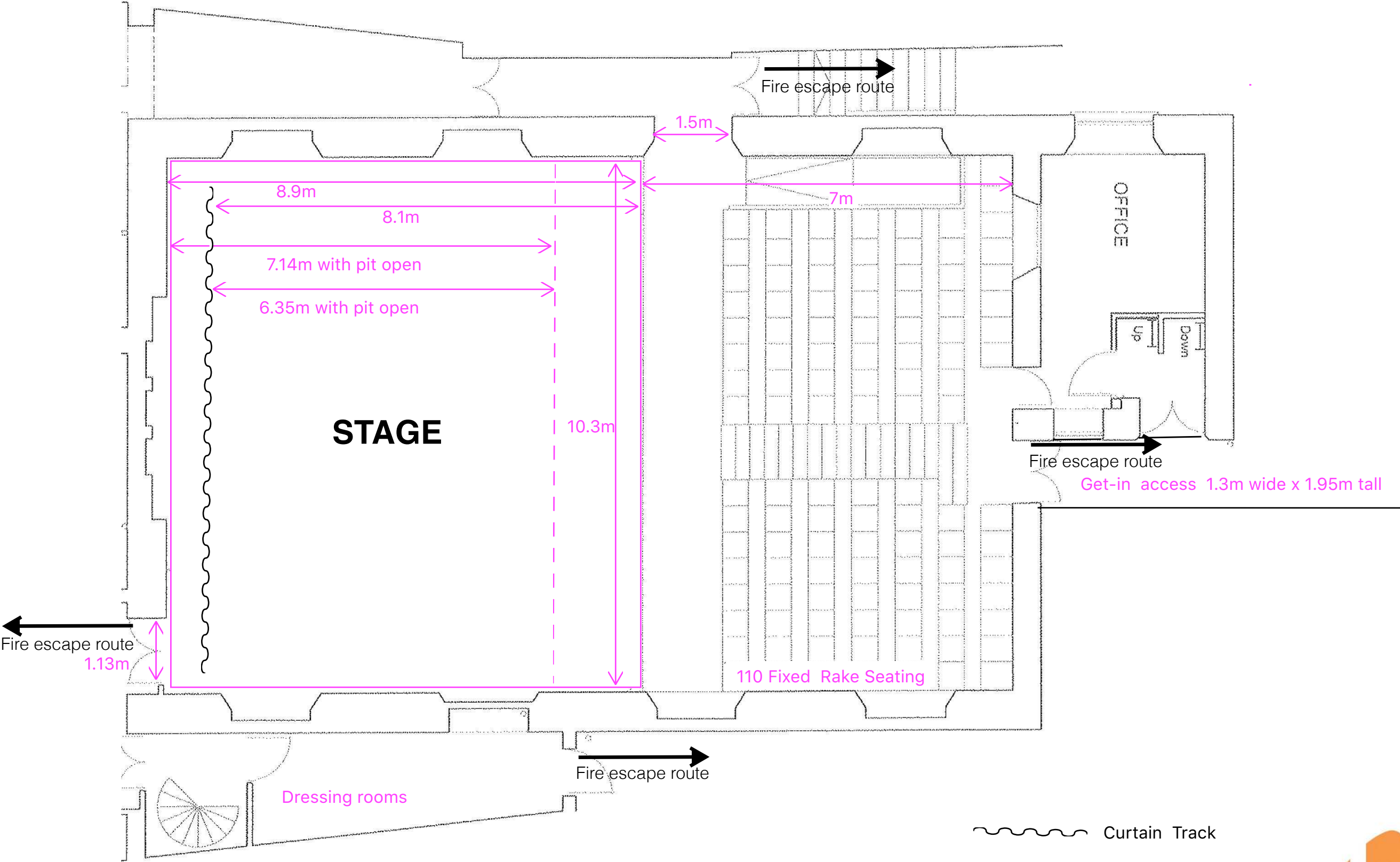


Sound mix position in the seating



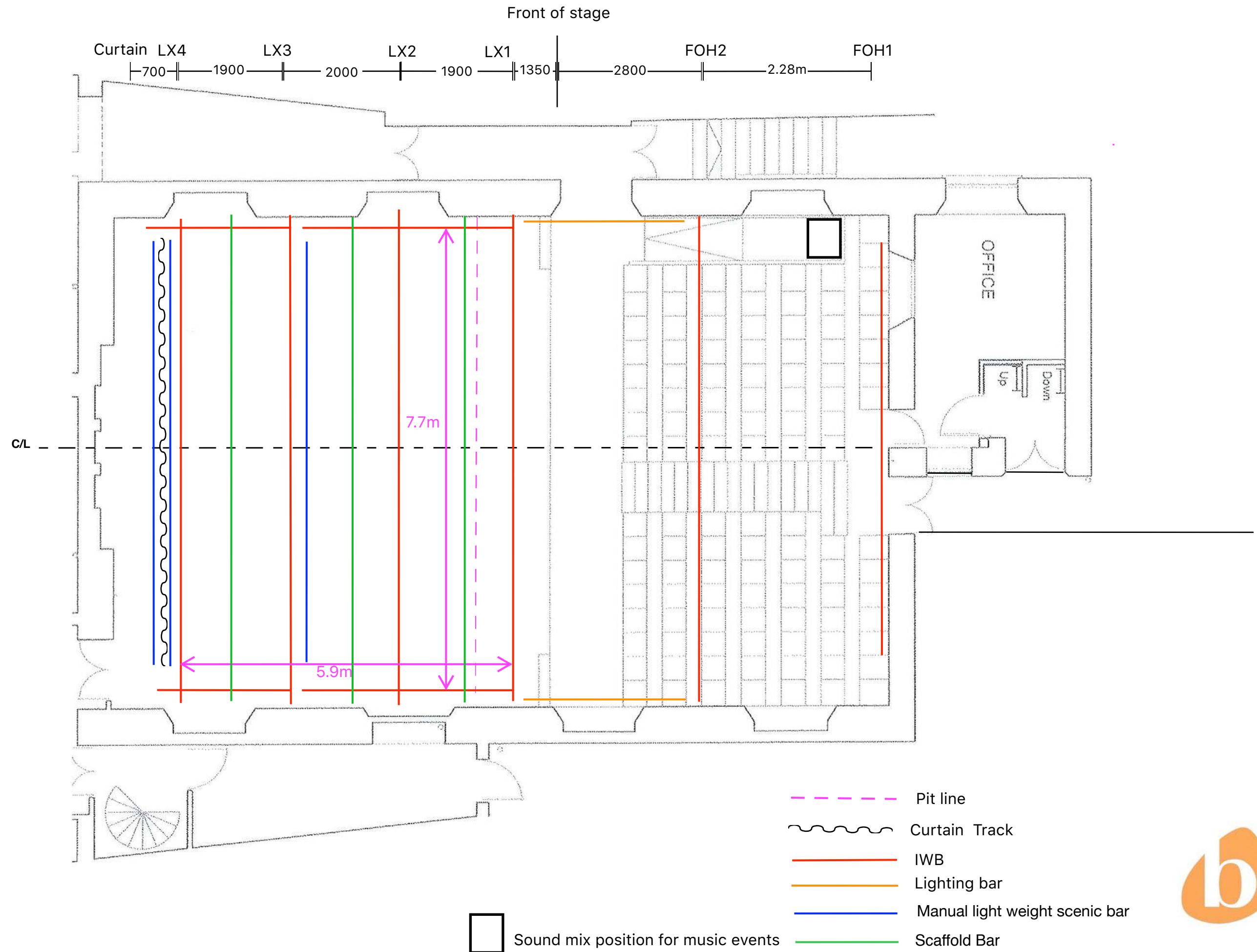
Barbican Theatre Main Auditorium

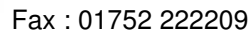
Floor Plan - do not use as scaled



Barbican Theatre Plymouth

LX Layout - do not use as scaled





Distance from SR Lx Bar to SL Lx bar 44 - 39 7.7 meters